

ZONING BOARD OF APPEALS AGENDA

Public Hearing Application # 3

Application # 21Z-0053
1838 Empire Boulevard

See Pages to Follow



08/10/2021

To Whom It May Concern,

We are requesting a special permit for additional signage for the Chipotle located at 1838 Empire Blvd Penfield NY 14580.

This building front faces two roadways (Empire Blvd and Creek St) and it would be advantageous to the location to have wall signage facing both streets. There will be no adverse effects to surrounding properties as they are commercial properties.

If you have any questions or need additional information, please feel free to contact me.

A handwritten signature in red ink, appearing to read "Kirk J Wright", with a long horizontal flourish extending to the right.

Kirk J Wright

Owner / Member

Sign & Lighting Services llc

Post Office Box 597

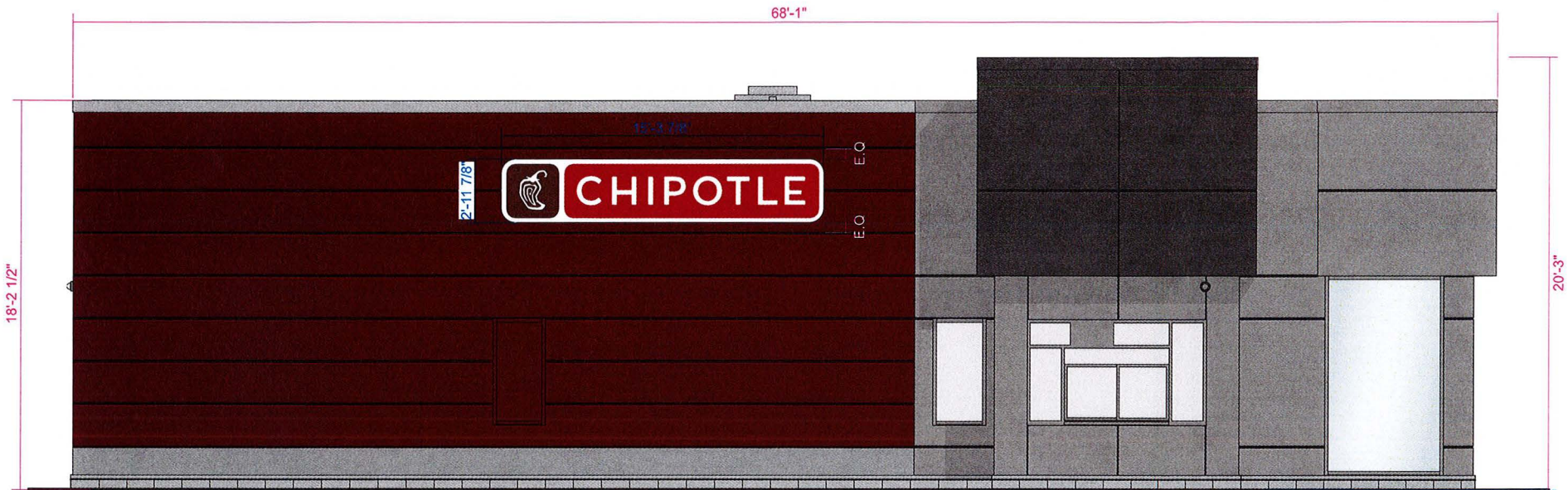
Ontario NY 14519

585-265-4462 Office

585-370-2700 Cell

www.sign-lighting.com

SCANNED



EXT ELEV - WEST

1/4" = 1'-0"

b **broadwaynational**
 100 Davids Drive., Hauppauge, NY 11788
 P631.737.3140 F631.737.3160
 INTERNAL USE ONLY: 26598_07.16.21_04.01_IB

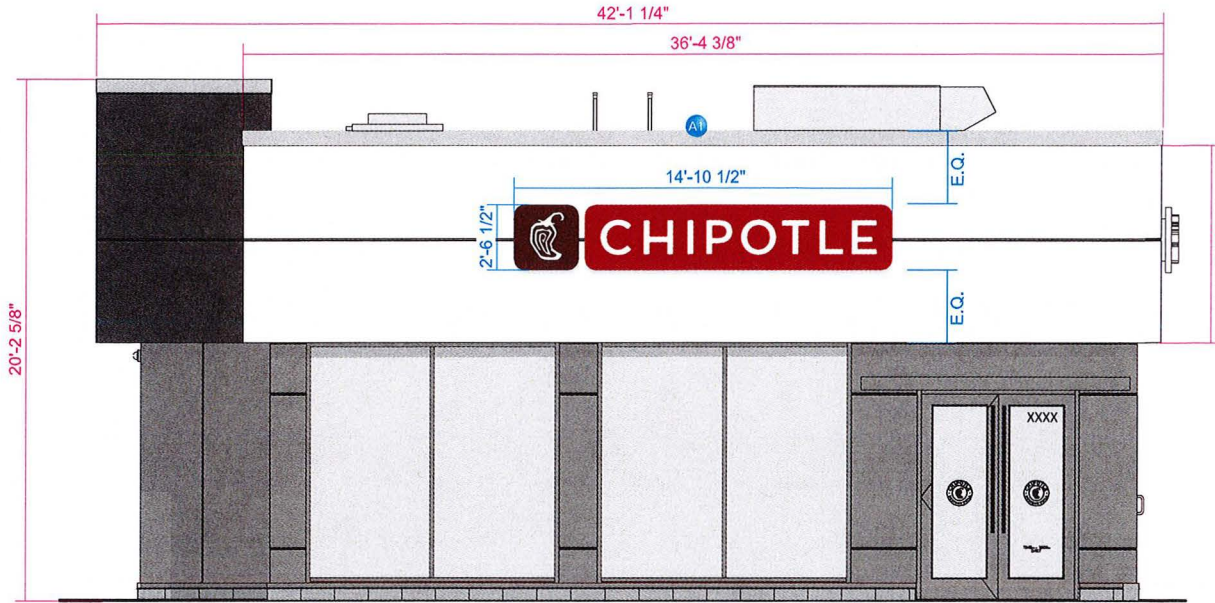
ELEVATION
CHIPOTLE

Approved Rejected
 Approved with Corrections Revise and Resubmit
 Signature: _____ Date: _____

CHIPOTLE STORE #4043
 1838 EMPIRE BLVD,
 WEBSTER, NY 14580

SCANNED

212-0053



EXT ELEV - SOUTH

1/4" = 1'-0"

b **broadwaynational**

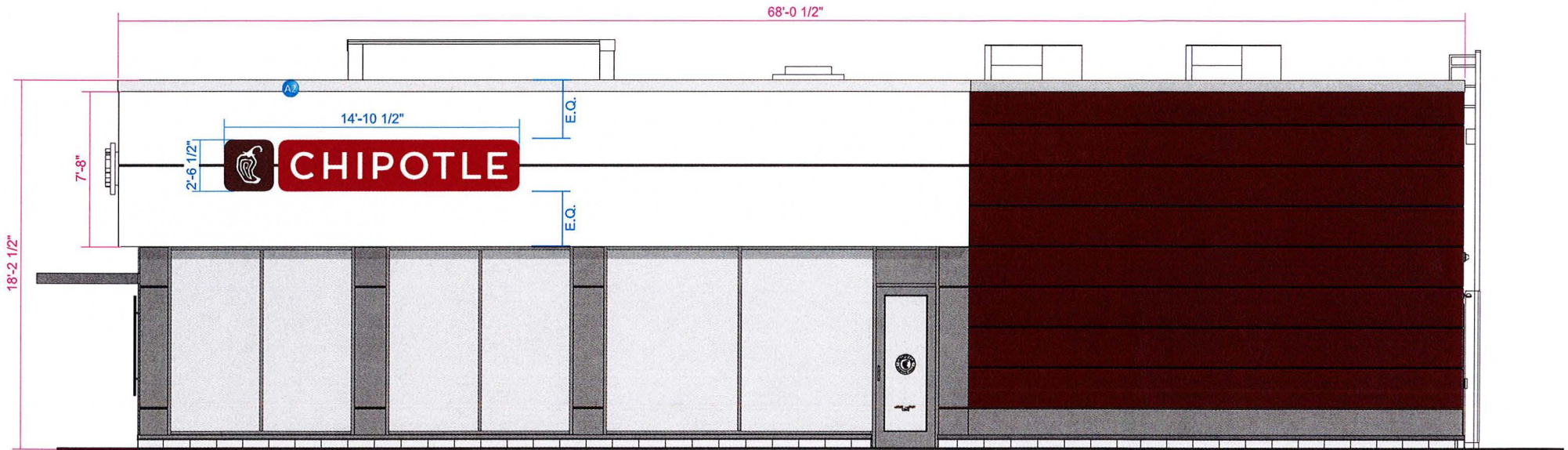
100 Davids Drive., Hauppauge, NY 11788
P631.737.3140 F631.737.3160
INTERNAL USE ONLY: 26598_07.16.21_02.00_IB

ELEVATION
CHIPOTLE

Approved Rejected
 Approved with Corrections Revise and Resubmit
Signature: _____ Date: _____

CHIPOTLE STORE#4043
1838 EMPIRE BLVD,
WEBSTER, NY 14580

SCANNED



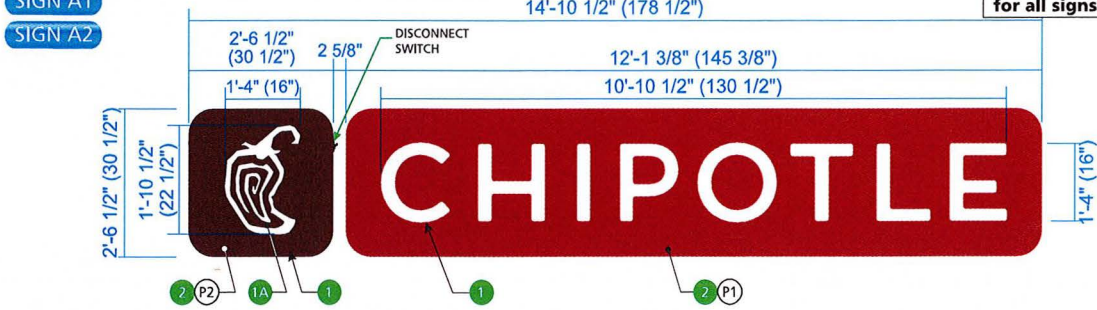
EXT ELEV - EAST

1/4" = 1'-0"

21Z-0053

RECEIVED
AUG 13 2021
SCANNED

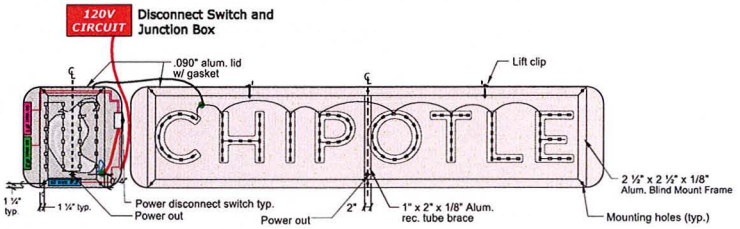
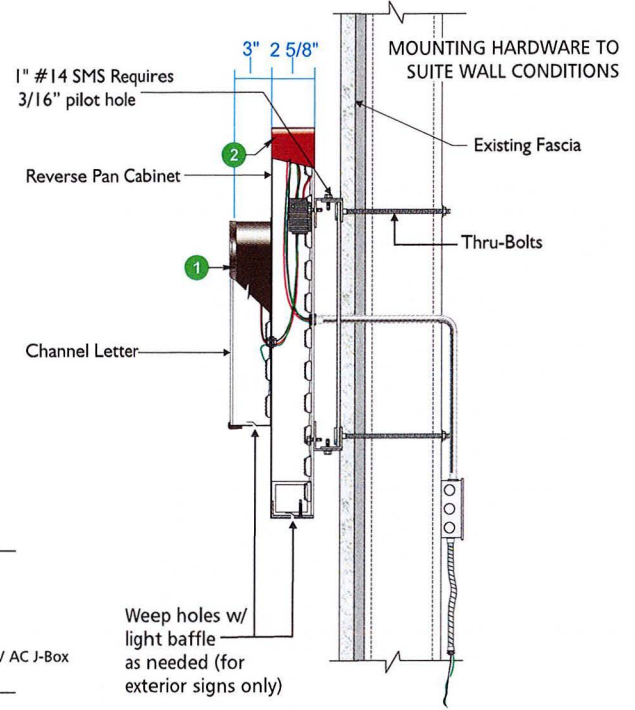
QTY (2) (BH-3 SIGN) HALO ILLUMINATED CHANNEL LETTER WALL SIGN 38.0 Sq. Ft.
Scale: 1/2"=1'-0"



NOTES:
lift points will be provided for all signs

SIDE DETAIL
SCALE: NOT TO SCALE

NOTES:
3/4" FIRE TREATED BLOCKING PROVIDED BY OTHERS



Color Key		
PMS#4625C Adobo Brown	PMS#484C Roasted Red	White Acrylic # 7328

SPECIFICATIONS FOR (1) ILLUMINATED WALL SIGN

- 1 CHANNEL LETTERS "CHIPOTLE" AND PEPPER LOGO**
LETTER TYPE = Face-Lit pan channel letters DEPTH = 3"
FACES = 3/16" Cyro #2447 Milk-White Acrylic
PEPPER GRAPHIC = 0.40" pre-fin. Adobo brown alum. F.C.O. overlay
TRIMCAP = 1" Brown Jewelite
RETURNS = .040" Pre-finished Adobo Brown aluminum (w/ weep holes)
BACKS = .040 Pre-finished white aluminum
ILLUMINATION=Sloan Prism Mini White LEDs or equivalent
MOUNTING=Mount flush to face of cabinets with #10 "blunt" ended screws as req.
- 2 BROWN & RED REVERSE PAN CABINETS**
CABINET=Lit reverse pan DEPTH=2 5/8"
FACE=1/8" Aluminum
RETURNS=@ Top & bottom: 2 1/2" x 1/8" Alum. angle
@ Ends/corners: (one piece) 1/8" Alum. hot glue and Versilok to face
BACK=.150 Clear lexan w/ perimeter angle clips for rev. pan attachment
ILLUMINATION=Sloan Prism Mini White LEDs
ATTACHMENT= (2) 1 1/2" x 1 1/2" x 1/8" alum. & (2) 2" x 2" x 1/8" alum angle spacer/mounting bars w/ 45° cut ends on back side of lexan back
MOUNTING=Mount to existing fascia w/ 3/8" fasteners through aluminum angle mounting frame assembly

- ELECTRICAL**
PRIMARY=120V by others within 3' of sign prior to install (10'-0" pigtail on back of cabinet)
SECONDARY=12V LED wired & power supplies inside of cabinets with access panel for future services
POWER DISCONNECT=Toggle switch on cabinet return
ELECTRICAL HOOK-UP=Final electrical connection to existing 120V AC J-Box
- COLOR SPECIFICATIONS**
- (P1) P.T.M. PMS #484C "Roasted Red" (Nuance)
NOTE: Paint all exposed fasteners to match adjacent finish
- (P2) P.T.M. PMS #4625C "Adobo Brown" (Nuance)

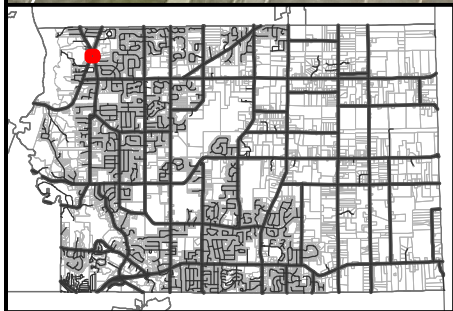
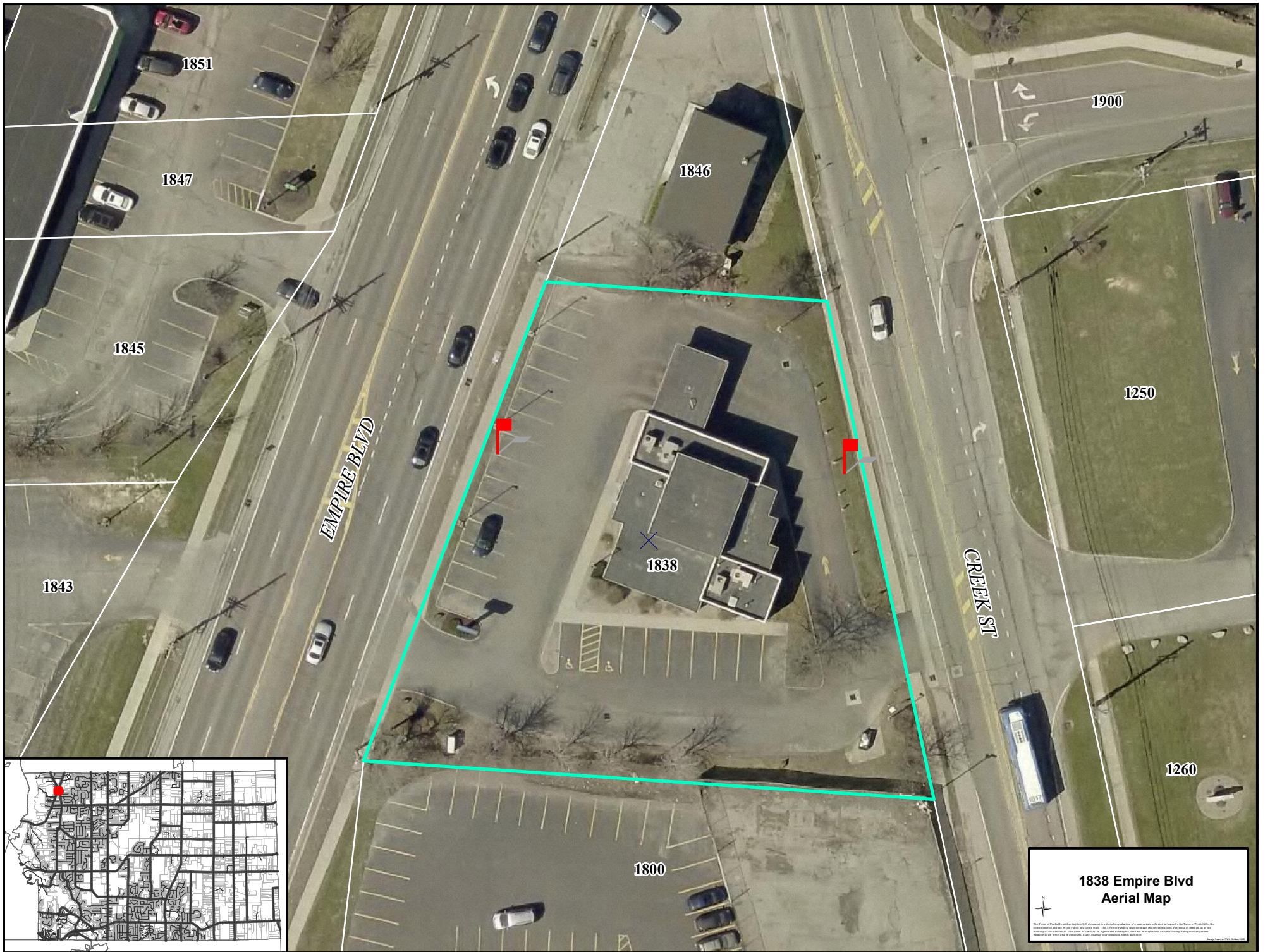
NOTES:
ALL ELECTRICAL PARTS & ASSEMBLIES UL LISTED APPROVED UL LABELS ATTACHED IF REQUIRED.

NOTES:
ELECTRICAL WIRING FROM SIGN WILL BE WIRED INTO THE EXISTING ELECTRICAL SOURCE.

b **broadwaynational**
100 Davids Drive., Hauppauge, NY 11788
P631.737.3140 F631.737.3160
INTERNAL USE ONLY: 26598_07.16.21_02.00_IB

DETAIL
CHIPOTLE
 Approved Rejected
 Approved with Corrections Revise and Resubmit
Signature: _____ Date: _____

CHIPOTLE STORE#4043
1838 EMPIRE BLVD,
WEBSTER, NY 14580



**1838 Empire Blvd
Aerial Map**

© 2014 AerialView.com. All rights reserved. This map is provided as a service to the user. The user is responsible for the accuracy of the information displayed on this map. The user is not to be held liable for any errors or omissions. The user is not to be held liable for any damages or losses resulting from the use of this map. The user is not to be held liable for any other matters.